

SCHEDULE 'A2'

To By-law No. 1136 (1987)

Zone Categories

- RESIDENTIAL ZONES**
- SR SPECIAL RURAL
 - RV1 RESIDENTIAL VILLAGE 1
 - RV2 RESIDENTIAL VILLAGE 2
 - RMV1 RESIDENTIAL MULTIPLE VILLAGE 1
 - RMV2 RESIDENTIAL MULTIPLE VILLAGE 2
 - R1 RESIDENTIAL 1
 - R2 RESIDENTIAL 2
 - R3 RESIDENTIAL 3
 - RM1 RESIDENTIAL MULTIPLE 1
 - RM2 RESIDENTIAL MULTIPLE 2
 - RD RESIDENTIAL DEVELOPMENT

- COMMERCIAL ZONES**
- NC NEIGHBOURHOOD COMMERCIAL
 - GC GENERAL COMMERCIAL
 - HC HIGHWAY COMMERCIAL
 - CR COMMERCIAL RURAL

- INDUSTRIAL ZONES**
- M1 LIGHT INDUSTRIAL
 - M2 GENERAL INDUSTRIAL
 - M3 INDUSTRIAL EXTRACTIVE

- OTHER ZONES**
- A AGRICULTURAL
 - I INSTITUTIONAL
 - P PUBLIC
 - OS OPEN SPACE
 - H HAZARD

 - URBAN AREA BOUNDARY

OFFICE CONSOLIDATION

This is an Office Consolidation of Zoning By-law No. 1136 (1987) for the Corporation of the Town of Pelham, as passed by Council on June 23rd, 1987.

For accurate reference, recourse should be made to the original Zoning By-law No. 1136 (1987) and amending By-laws.

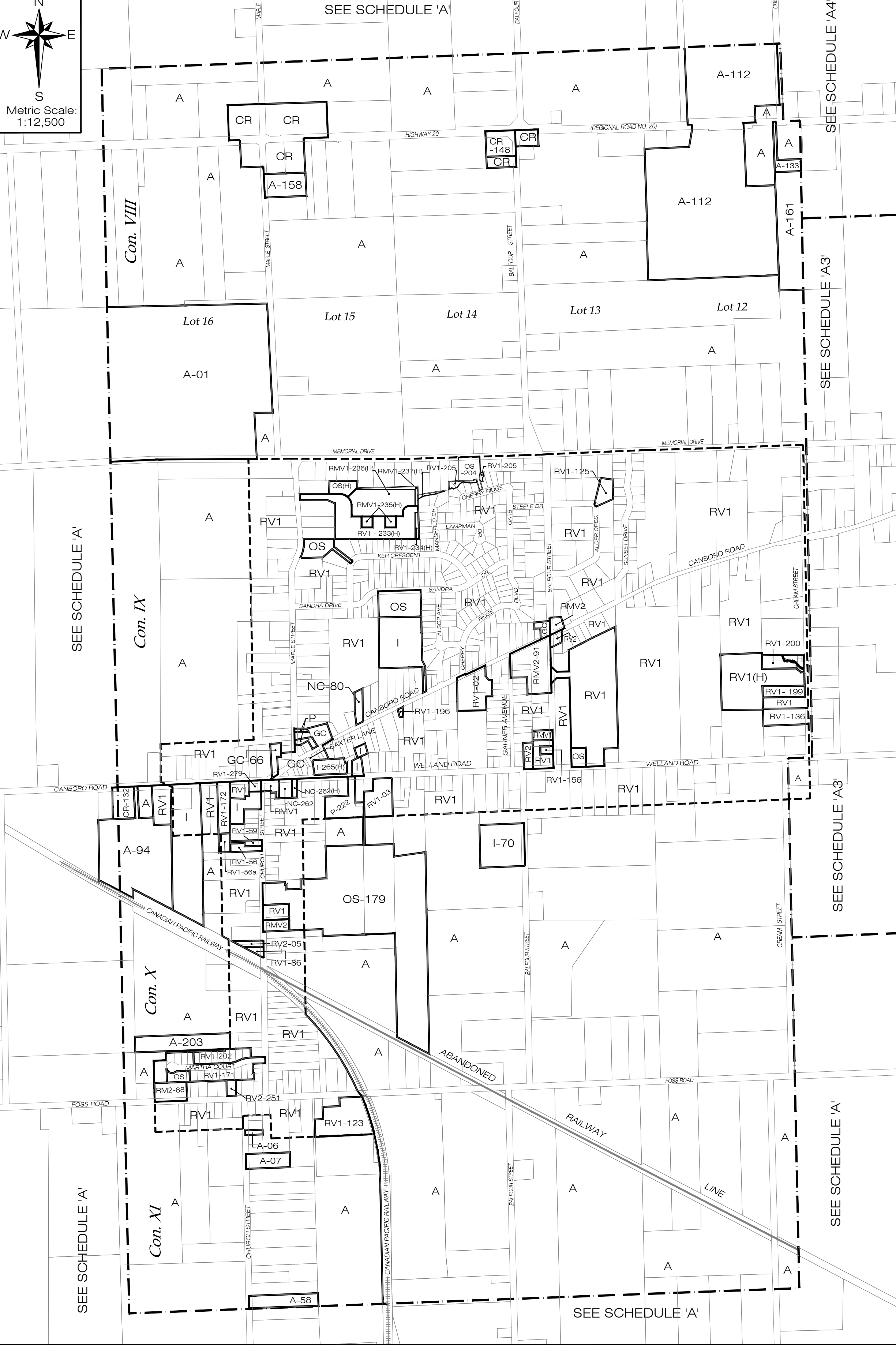
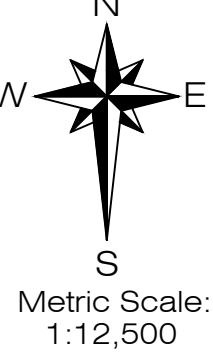
CONSOLIDATED TO JUNE 2017

This is Schedule 'A2' to By-law No. 1136 passed this 23rd day of June 1987.

ORIGINALLY SIGNED BY MURRAY HACKETT

ORIGINALLY SIGNED BY E.G. BERGENSTEIN

DIGITAL ZONING MAP	
DATE: JUNE 2017	SCALE: 1:12,500
DRAWN BY: C.T.	CAD FILE: MAP A2
ASSESSMENT MAPPING - FEBRUARY 2017	



ZONE AMENDMENTS & BY-LAWS TO THE ZONING BY-LAW

• RV1 to NC-80	1160 (1987)	• RV1 to RV1-123	1649 (1994)	• RV1(H) to RV1	3538 (2014)
• RV1-02	1178 (1988)	• RV1 to RV1-125	1704 (1995)	• RV1 to I	3611 (2015)
• A to CR	1239 (1989)	• A to CR-132	1792 (1996)	• P to NC-262(H)	3718 (2016)
• RV1 to RV1-56a	1246 (1989)	• RV1 to RV1-136	1903 (1997)	• RMV2-04 & RV1 to I-265(H)	3763 (2016)
• RV1-05 to RV1-86 & RV2-05	1259 (1989)	• CR to CR-148	2137 (1999)	• NC-262(H) to NC-262;	
• A to CR	1264 (1989)	• RV1-55 to RV1 & RV1-156	2191 (2000)	• RV1 to NC-262(H)	3868 (2017)
• I to RV1 & RMV2-91	1284 (1989)	• A to A-158	2266 (2001)	• I to RV1-279	3873 (2017)
• RM2-143 to RM2-88	1302 (1989)	• RV1 to RV1-171(H)	2417 (2002)		
• I to RMV2-91 & RV1	1326 (1990)	• A to CR	2426 (2002)		
• A to A-94	1353 (1990)	• RV1 to RV1-172	2430 (2002)		
• RV1; OS	1401 (1991)	• OS, A & RV1 to OS-179	2531 (2003)		
• M3 to A-112 & A	1509 (1992)	• RV1 to RV1-196	2678 (2005)		
• RV1 to RV1-03	1519 (1992)	• RV1 to RV1-199, RV1-200, RV1(H) & H	2684 (2005)		
		• RV1-171(H) to RV1-202(H), A & OS;			
		• A to RV1-171(H) & RV1-202(H)	2706 (2005)		
		• A to A-203	2707 (2005)		
		• RV1 to OS-204; RV1 to RV1-205	2721 (2005)		
		• RV1-172 Temporary Use Extension	2763 (2006)		
		• RV1-202(H) & RV1-171(H) to RV1-202 & RV1-171	2813 (2006)		
		• GC to RV2	2819 (2006)		
		• RV1 to RV1(H); RV1 to OS	2894 (2007)		
		• A-133 Additional Uses	2897 (2007)		
		• RV1 to P-222	3083 (2010)		
		• RV1 to P-222; OS-179 to RV1 & P-222	3132 (2010)		
		• RV1-172 Text Revisions	3307 (2012)		
		• RV1 to RV1-233(H), RV1-234(H), RMV1-235(H),			
		• RMV1-236(H), RMV1-237(H) & OS(H)	3311 (2012)		
		• RV1 to RV2-251	3532 (2014)		