

SCHEDULE 'A1'
To By-law No. 1136 (1987)

Zone Categories

RESIDENTIAL ZONES

- SR SPECIAL RURAL
- RV1 RESIDENTIAL VILLAGE 1
- RV2 RESIDENTIAL VILLAGE 2
- RMV1 RESIDENTIAL MULTIPLE VILLAGE 1
- RMV2 RESIDENTIAL MULTIPLE VILLAGE 2
- R1 RESIDENTIAL 1
- R2 RESIDENTIAL 2
- R3 RESIDENTIAL 3
- RM1 RESIDENTIAL MULTIPLE 1
- RM2 RESIDENTIAL MULTIPLE 2
- RD RESIDENTIAL DEVELOPMENT

COMMERCIAL ZONES

- NC NEIGHBOURHOOD COMMERCIAL
- GC GENERAL COMMERCIAL
- HC HIGHWAY COMMERCIAL
- CR COMMERCIAL RURAL

INDUSTRIAL ZONES

- M1 LIGHT INDUSTRIAL
- M2 GENERAL INDUSTRIAL
- M3 INDUSTRIAL EXTRACTIVE

OTHER ZONES

- A AGRICULTURAL
- I INSTITUTIONAL
- P PUBLIC
- OS OPEN SPACE
- H HAZARD

N.E.C. PLAN BOUNDARY
NOTE: Section 6.36 provides that this zoning by-law have no effect within the N.E.C. Development Control Area, as defined by provincial regulation.

OFFICE CONSOLIDATION

This is an Office Consolidation of Zoning By-law No. 1136 (1987) for the Corporation of the Town of Pelham, as passed by Council on June 23rd, 1987.

For accurate reference, recourse should be made to the original Zoning By-law No. 1136 (1987) and amending By-laws.

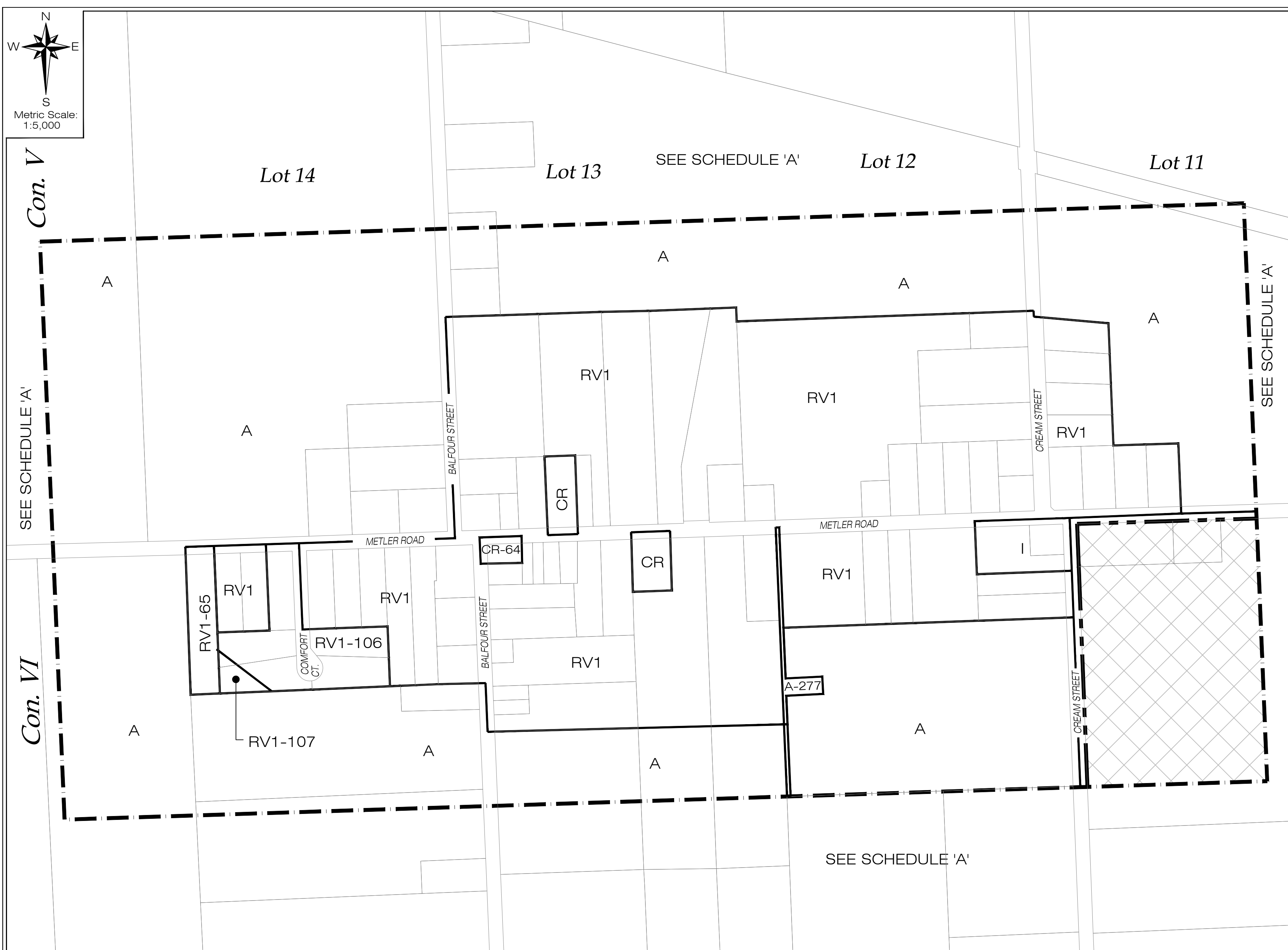
CONSOLIDATED TO JUNE 2017

This is Schedule 'A1' to By-law No. 1136 passed this 23rd day of June 1987.

ORIGINALLY SIGNED BY MURRAY HACKETT

ORIGINALLY SIGNED BY E.G. BERGENSTEIN

DIGITAL ZONING MAP	
DATE: JUNE 2017	SCALE: 1:12,500
DRAWN BY: C.T.	CAD FILE: MAP A1
ASSESSMENT MAPPING - FEBRUARY 2017	



ZONE AMENDMENTS & BY-LAWS TO THE ZONING BY-LAW

- LANDS DELETED FROM THE ZONING BY-LAW 1417 (1991)
- RV1 to RV1-106 & RV1-107 1428 (1991)
- A to A-277 3870 (2017)